

Welcome to the School of Physical and Chemical Sciences

Introduction to the School and Central University Services

Head of School

Professor Adrian Bevan



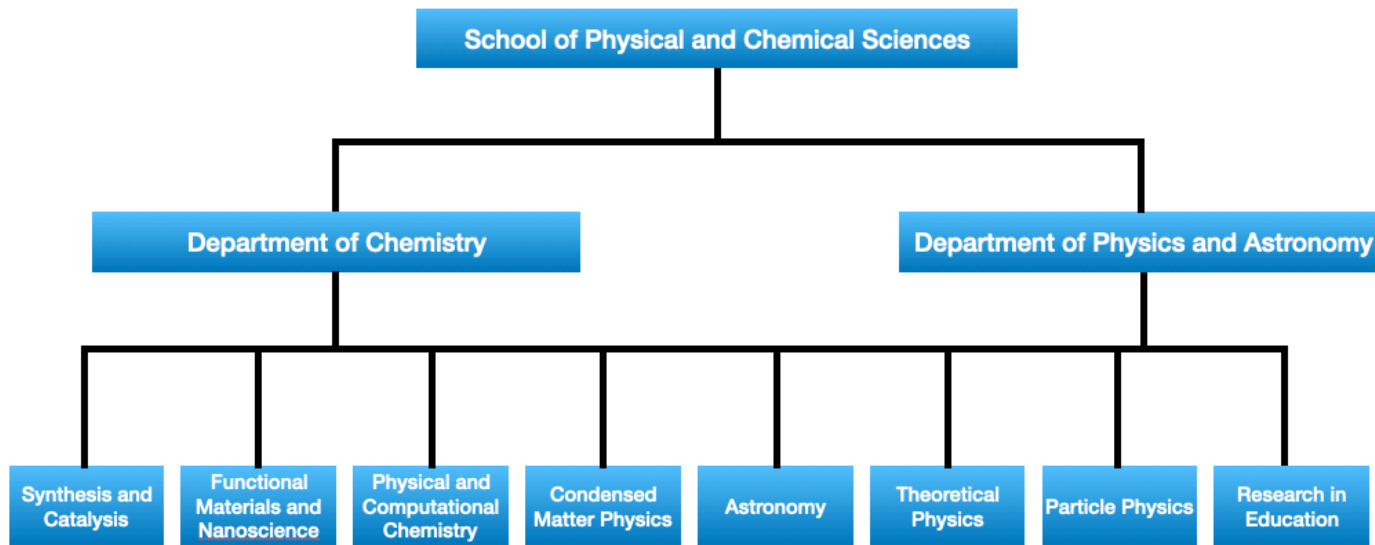
Welcome to our new School!

We are a new School formed in August 2021 from the existing School of Physics and Astronomy and the department of Chemistry which was in another School within the Faculty of Science and Engineering.

- Strengthen core disciplines which are vital in any research intensive university.
- Exploit the synergies between Physics and Chemistry in research and teaching.
- A better balance of undergraduate student numbers within the Faculty.
- Catalyse the development of new UG and PGT programmes, and new research initiatives.

Welcome to our new School!

High-level research area structure:



Staff teaching, independent project research opportunities and teaching cuts across the school. People with the best capabilities are delivering on your programmes to maximise the student experience

Our research informs the way that we teach on modules, and the content of modules. We always look for new opportunities to teach relevant and up to date material

Who is who in the School?

Head of the Department of Chemistry is **Dr Isaac Abrahams**

Head of the Department of Physics and Astronomy is **Prof. Adrian Bevan**

Head of the School is **Prof. Adrian Bevan**

Deputy Head of School is **Dr Isaac Abrahams**

School Manager is **David Boyle**

Director of Education is **Dr Lesley Howell**

Director of Research is **Dr Jan Mol**

NSS and PTES Highlights

NSS: National Student Survey: some highlights include:

7/54 for student voice in Chemistry

Increases of +21 places in Physics and +15 in Chemistry

Also scored highly in organisation

PTES: Postgraduate Teaching Student Survey:

Astrophysics MSc: overall 85% student satisfaction

Chemistry MSc: overall 83% student satisfaction

Physics MSc: overall 100% student satisfaction

Overview of Education

Dr Christopher White (for Dr Lesley Howell)

Deputy Director of Education

Who's Who in Education in SPCS

Director of Education

Dr Lesley Howell

Education and Student Services Manager – Mr Harvey Abraham-Green

Exam Board Chair

Dr Peter Wyatt

Director of Teaching and Learning – Chemistry

Dr Tippu Sheriff

Director of Teaching and Learning – Physics & Astronomy

Dr Christopher White

Exam Board Chair

Dr Andrei Sapelkin

Senior Tutor – Chemistry

Dr Giorgio Chianello

Senior Tutor – Physics & Astronomy

Dr David Mulryne

Student Support Officer – Mr Mason Newbury

Year Tutors

Year Tutors

Module Organisers (MO)

Module Organisers/Assistants



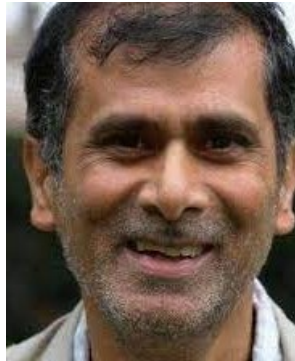
Harvey
Abraham-
Green



Dr Chris White



Dr David Mulryne



Dr Tippu Sheriff



Dr Giorgio Chianello



Mason
Newbury



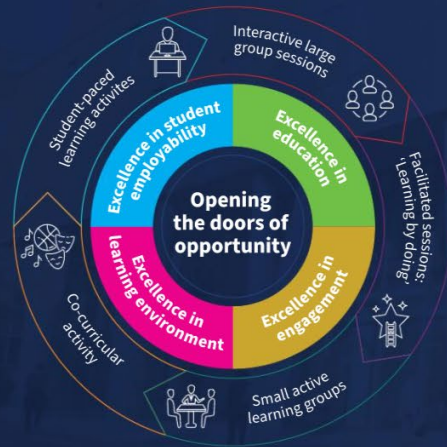
Eli Rezasoltani

The Queen Mary Education Approach: Opening the doors of opportunity

To deliver “an outstanding inclusive, world-class education and student experience, co-created with our diverse student body, enhanced by our world-leading research and latest technological developments“

Ambition – to be the most inclusive university of its kind

Four Pillars of excellence in education and student experience



Underpinning all programmes at Queen Mary University of London


Excellence in Education

The education we provide is led by world-class academics: our students are taught by the people who wrote the textbooks. Our strategy builds on our knowledge and subject excellence to ensure that students are co-creators in their education and the learning environment. Our educators are equipped to meet the needs of diverse learners, and can support students to achieve their full potential and be leaders in their chosen fields.

[Read more](#) 

Excellence in Student Engagement

We will continually develop new approaches to support students in their learning and make sure they have a clear voice in the development of the University, working closely with Queen Mary Students' Union.

[Read more](#) 

Excellence in Learning Environment

Providing a world-class digital and physical learning environment for students is crucial for their success. At Queen Mary, students are partners in the development of their environment.

[Read more](#) 

Excellence in Student Employability

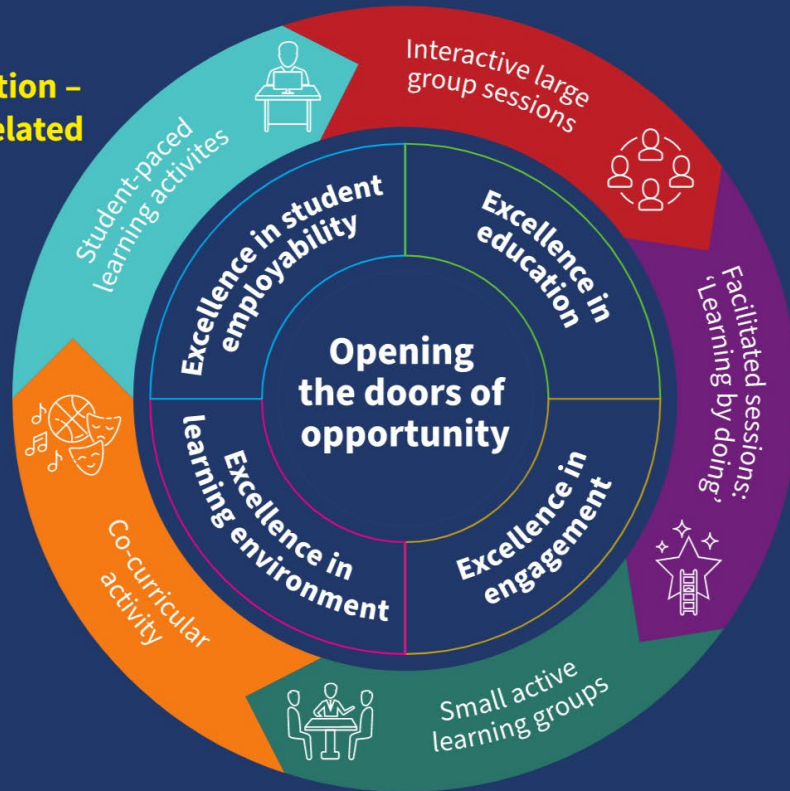
We will ensure our students are supported in realising the careers to which they aspire.

[Read more](#) 

Bringing our Education Approach to life

The foundation of education – ACE – consists of 5 Interrelated Components.

Please click on each Component to find out more.



The Interrelated Components are underpinned by:

Tailored support from Advisors

Learning support:

- writing support
- Get Ahead transition programme
- targeted learning surgeries
- mentoring
- coaching

Feedback on learning journey:

- testing knowledge and understanding
- discussions with programme directors and module organisers

Development of key study and transferable skills

Delivery 23/24

- Mixed Mode Education (MME)
 - Bringing together technology and pedagogy to support an inclusive and engaging learning experience
- In first instance you should attend in person on campus
 - Maximise student experience
 - Whiteboards
 - Interaction with peers and staff
 - Learning community
- However, should there be an odd occasion where you cannot attend in person you may be able to join via Zoom
- Cannot guarantee the same student experience
- MME not in every session (don't assume!)
- Some classes like your lab classes have a mark associated with attendance and skills assessments with a qualifying mark.
 - This means you cannot pass this module if you do not meet the qualifying mark

What can you expect from us?

- A safe and supportive environment
- Academic, pastoral and developmental support
- Actively listen to concerns and feedback
- Listen to student voice
 - Student reps
 - Staff Student Liaison Committee
 - Coffee mornings/afternoons
- Make improvements and changes to the programmes based on your feedback (where possible)
 - Module evaluations
 - SSLC

What can you expect from us?

Feedback on your work and progress

- Comes in different formats
- Unlikely to be a “model” answer or a mark scheme
- Formative
- Could be an informal discussion in the lab with a demonstrator
- To more formal written feedback
- Provides an opportunity for reflection
- Self assessment – how can I improve?
- How can I act on this feedback for next time?

How to succeed?

Engagement

Thank you



Queen Mary
University of London

SPCS Student Support

Mr Mason Newbury – Student Support Officer

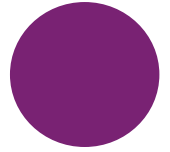
Who is your Student
Support Officer?

Mason Newbury

The best way to contact me:

Email: m.newbury@qmul.ac.uk

Office: Office 110, First
Floor, GO Jones Building



Where to find me?

SPCS Admin Office

Room 110, first floor, GO Jones Building

➤ Open Monday to Friday (10 – 4pm)

Here you will find the SPCS admin team including the student support officer.



What does the SSO do?

- **First point of contact** for all students and signposting support.
- **Offer advice** on matters which may be impeding your ability to study.
- Monitor **attendance and engagement** with your studies and coursework.
- **Feedback and Improving** the student experience.
- Oversee all **EC claims** made by Physics and Chemistry students.

If you need support don't leave it too late!

Please do not suffer in silence!

If we don't know that you are struggling, then we can't help you. The biggest regret of first year students is not asking for help sooner.

If you are having any difficulties at all with your studies, please let us know. **We are here to help** and can provide you with guidance and support.

If you do not feel comfortable approaching us, you can always talk to someone else in the School who you have found supportive (such as your advisor, a module organiser or teaching staff).

What are Extenuating Circumstances? (ECs)

An extenuating circumstances claim can be made if you are unable to submit a piece of work, attend a lab session or sit an exam. This will only be accepted if the reason meets the EC criteria.

Extenuating circumstances are usually personal or health problems that are both **unforeseen** and **outside of your control**.

Health problems include your **emotional wellbeing and mental health**, as well as your **physical health**.

Extenuating circumstances **do not** include computer problems, misreading your exam timetable, employment commitments, planned holidays or events, or local transport delays.

How do you make an EC claim?

Please visit **MySIS** to make an EC claim online.

There are two types of claim, a **standard claim** and a **self-certify claim**.

Standard claims must be **supported with evidence**. (for example, a GP letter if for ill-health).

Self-certify claims **do not** require evidence but must still meet the EC criteria.

Please note: Students can self-certify up to **3 times each year** (for up to 7 days each time) and cannot be submitted back-to-back to get a longer extension.

Staff Student Liaison Committee (SSLC)

**FIRST
YEAR REPS
NEEDED!**

The SSLC is a meeting held once every semester with the student reps and relevant staff.

It give students the **opportunity to give feedback** on their programme of study and wider aspects of their experience.

Student Wellbeing at QMUL

University Support Services

Disability and Dyslexia Service (DDS)

Located in the Bancroft Building
Room 3.06 (3rd Floor)

Advice and Counselling Service

Located in
Geography Square

Careers Services

Located in room WG3
of the Queens' Building

QMUL Library

Located on Library
Square

Students' Union (QMS U)

Located within
the Students' Union Hub

Advice and Counselling Service





Advice and Welfare Advisors

- Funding your studies
- Applying for Hardship Funds
- Dealing with Debt
- Budget planning
- Welfare rights and benefits
- Tuition fee issues
- Immigration Law
- International student issues

Counselling

Counsellors are currently offering **in person** and **online appointments** via MS Teams.

- Relationship problems
- Depression
- Anxiety
- Difficult decisions
- Identity and Sexuality
- Family Problems
- Exam Stress
- Homesickness
- Group Therapy

How to contact Advice and Counselling?

Either,

- On the ACS website via their webform.

OR

- On Mysis via the 'student services' tab.

The screenshot displays a grid of service categories:

- Money and practical advice**
 - How to fund your studies
 - Tuition fees
 - Budgeting & managing money
 - Changes to study
- Wellbeing support**
 - Counselling
 - Mental Health Advice
 - Student Wellbeing Advice
 - Wellbeing Resources
- Visas and international advice**
 - Do I need a visa?
 - How to apply
 - Travelling
 - Changes during your studies
- Sexual assault and harassment advice**
 - Specialist advice
 - Practical support
 - Emotional support
 - Signposting and referrals
- I'm supporting someone else**
 - Information on supporting students experiencing difficulties
 - Advice for friends and family
 - Advice for staff
- Help in a crisis**
 - Emergency support
 - Urgent mental health support
 - Crisis listening helplines
 - Crisis organisations
- About the Advice and Counselling Service**
 - Data protection and confidentiality
 - Policies and procedures
 - Feedback

Contact us

We are normally open Monday to Friday from 10.00 am – 4.00 pm apart from University closure days.

[Contact us here](#)

↑

Disability and Dyslexia Service (DDS)



The Disability and Dyslexia Service (**DDS**) offers support for all students with disabilities, specific learning differences and mental health issues at Queen Mary University of London (QMUL).

A video call interface showing a man speaking. The man is bald, has a light complexion, and is wearing a light blue button-down shirt. He is positioned on the right side of the frame. The background behind him is a plain, light-colored wall. On the left side of the frame, there is a vertical olive-green bar. In the bottom-left corner, there is a dark blue rectangular box containing white text.

Simon Jarvis
Head of the Disability
and Dyslexia Service

Disability and Dyslexia Service (DDS)

There are specially trained advisors to support with:

- Dyslexia and specific learning differences
- Disabilities and DSA support
- Autism support and assessments
- Mental health issues
- Exam access arrangements (extra time etc.)
- Accommodation and dedicated study space

The Disability and Dyslexia Service is located on the 3rd floor of the Francis Bancroft Building in 3.06.

Please [email the Disability and Dyslexia Service \(dds@qmul.ac.uk\)](mailto:dds@qmul.ac.uk) or use the [DDS online contact form](#) on their website to get in touch or book an appointment.

Student Health Service

There is a free Student Health Service available on campus
(located in the Geography Building at Mile End Campus).

The Student Health Service is provided by Globe Town Surgery.

Students living in Queen Mary accommodation at Mile End or Whitechapel and students living in the borough of Tower Hamlets (postcodes E1, E2, E3 and E14) are encouraged to register with the Student Health Service.

You can register online – www.studenthealth.qmul.ac.uk

Any Questions?

Thank you



Queen Mary
University of London

A very warm welcome from Queen Mary Library Services!



1. Your Library Services Online qmul.ac.uk/library

Using Library Services | Self Service ▾ | Academic skills ▾ | Resources & Collections ▾

MyLibrary

Access your library account, and top up print credit

New Students

Get started using Library Services

Welcome and Induction

Books, e-books and DVDs

Articles and more

[Advanced Search](#)

[Help with Library Search](#) [A-Z list of Databases](#)
[Resources Guides by Subject](#) [E-Journals by Subject](#)
[Reading Lists Online](#) [Get it for me](#)

Book a study space

Some of our spaces require a booking to manage availability

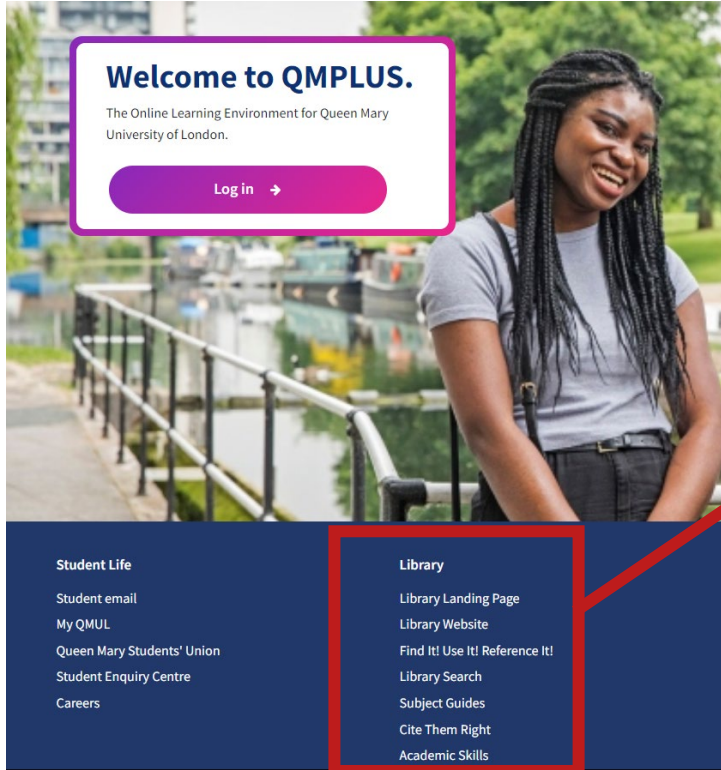
Book a study space

Web chat & FAQs

Search our FAQs and chat online with Library Staff

Library Live Chat

Your Library Services on QMPlus



Library

Library Landing Page

Library Website

Find It! Use It! Reference It!

Library Search

Subject Guides

Cite Them Right

Academic Skills

2. Using Scholarly Sources of Information



Queen Mary Library Services helps you to access and use the information you need to succeed at university.

- Scopus
- Web of Science
- Sage Research Methods
- PubMed
- Science Direct
- Jstor

QMUL Library Subject Guides

<https://www.qmul.ac.uk/library/library-skills/resource-guides-by-subject>

Books, e-books and DVDs

Articles and more

[Advanced Search](#)

[Help with Library Search](#)

[Resources Guides by Subject](#)

[Reading Lists Online](#)

[A-Z list of Databases](#)

[E-Journals by Subject](#)

[Get it for me](#)

- Databases
- Useful Websites
- Other Libraries

3. Welcome Week Library Tours



Mile End Library Tour

Going on a self-directed library tour is a great way to get to know the resources and services that we provide.

4. Study spaces – to suit your study needs

Book a study space

To ensure social distancing you need to book a study space

[Book a study space](#)

- You might be studying in a group where you need to discuss your work or working on your own where you need a quiet study environment.
- We provide a range of spaces in our three libraries and at other locations at Queen Mary to meet both these needs.

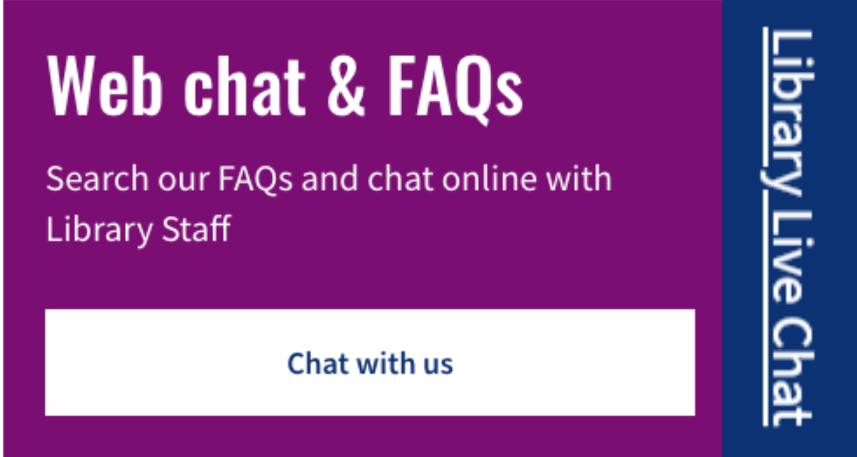
Mile End Library Transformation 2021-2023



- Two-storey extension to the south end of the building, providing an additional 500 study spaces
- More loanable laptops and new PCs
- Sympathetic refurbishment to the 1st and 2nd floors
- A new, enlarged Archives Reading Room
- Fetching Service to retrieve books from 2nd floor for now.

5. Getting Help

- Check Library website for information
- Search our FAQs
- Try our Webchat during staffed hours.
- Email us at library@qmul.ac.uk



Web chat & FAQs

Search our FAQs and chat online with Library Staff

Chat with us

Library Live Chat

The banner features a purple background with white text for the title and search information, and a white button with blue text for the chat link. A dark blue vertical bar on the right contains the text 'Library Live Chat' in white.

Getting Help with Subject Related enquiries



James Soderman
Faculty Liaison Librarian
Science & Engineering

Email the Science and Engineering Teaching & Learning Support Team at:

library-sande@qmul.ac.uk

Getting Help with Academic Skills

- Effective reading and writing
- Revision and exam preparation
- Dissertations
- Maths and statistics
- Academic Integrity
- and more...

Email our Academic Advisers at:

academicskills@qmul.ac.uk

We wish you every success during
your time at Queen Mary!

Thank you



Queen Mary
University of London

Welcome to Queen Mary University of London





We are Careers & Enterprise

Call into reception or phone us.

iQ East 0.08, Mile End Road



020 7882 8533



careers@qmul.ac.uk



@qmcareers



@qmcareers



www.qmul.ac.uk/careers



Careers and Enterprise is here to help you. We provide students with information, advice, and guidance on a range of topics, including choosing a career, finding work experience, applying for further study, and starting your own business.

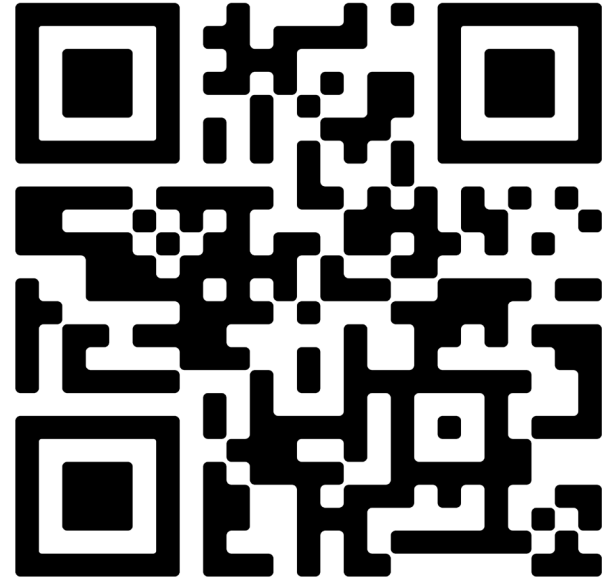
What can I do with my degree?	From application to assessment centre - all the resources you need	Graduate Attributes
Finding work experience, internships, placement & graduate jobs	Alumni profiles & alumni networking	Professional Memberships and Learned Societies
Promoted opportunities		

- > Using online resources for career success
- > CVs, cover letters & application forms
- > Psychometric tests (numerical, verbal reasoning, logical, situational judgement)
- ✓ Preparing for interviews (pre-recorded, virtual, face-to-face)

QM Careers Hub

To receive vacancies and events,
complete your 'Profile' and...

Unlock your QM Careers Hub!



QR code to access QM Careers Hub

You career journey... EAST

EAST is the Queen Mary student career journey, which will help you prepare for your next steps, whether that be work, study, or your own enterprise.

Explore your career options

Acquire experience and skills

Showcase your experience and skills

Transition towards your next steps

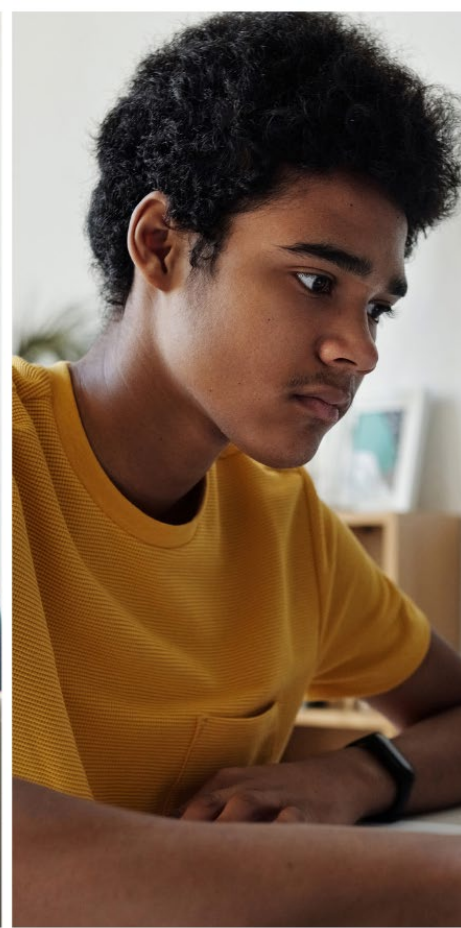
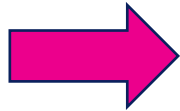




QTaster

- Visit a different company each week and gain insight into different sectors to discover what might suit you.
- Runs Autumn, Spring & Summer
- **Deadline: 26th September**

Scan here to
find out more

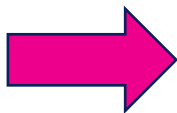




Student Consultancy Project

- Build your employability skills working with fellow students on a real-life consultancy project for a business/charity.
- Runs Autumn, Spring & Summer
- **Deadline: 25th September**

Scan here to
find out more

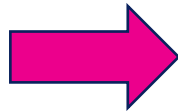




QTemps

- Learn about the world of work and your own strengths and preferences as you gain **paid** temporary work around your studies.
- Almost all roles on campus or local to QMUL
- Create a profile on <https://q-temps.co.uk/>

Scan here to
find out more



Enterprise

- **QHack:** Develop your entrepreneurial skillset in our weekend bootcamp. Starting early November.
- **QIncubator:** Test your business idea in our 8-week online programme. **Deadline: 24th September**
- **QAccelerator:** Designed to support growing businesses.
- **Funding:**
- **Try It** – £500 to test an idea.
 - **Build It** – up to £10,000 to build a product.
 - **Launch It** – up to £5,000 to launch a business.
 - **Grow It** – up to £3,000 to grow a business.

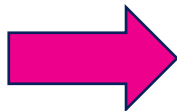




QMentoring

- Explore career ideas with a mentor from the Queen Mary alumni community or a UK-based professional. **For UGs in receipt of bursary**
- Runs twice a year: November-May, February-August.
- Applications Open 26th Sept and close 26th October

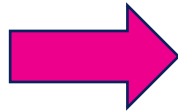
**Scan here to
find out more**



Micro Internships

- Experiment with a career idea through a 40-hour project that fits around your studies.
- Receive training before and after
- Programme runs spring & summer.

Scan here to
find out more



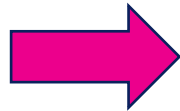
Support for Students with a Disability

Extended 40-minute career guidance and application appointments (email careers@qmul.ac.uk to request)

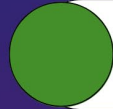
Resources for talking to employers about your disability

Specialist disability themed workshops.

Scan here to find
out more

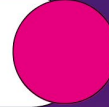


Monday 2nd
October



International Careers
Drop-In

International Careers
Drop-In



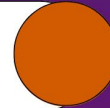
Wednesday 4th
October

Monday 9th
October



Networking and LinkedIn
Basics

Commercial
Awareness



Tuesday 10th
October

Wednesday 11th
October



Interview Techniques

Application
Documents/Interview Prep



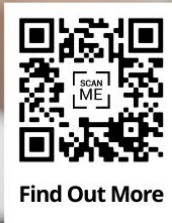
Tuesday 17th
October

Applying for Medicine and Dentistry.

Are you considering a career in medicine or dentistry? Come along to this workshop to learn:

- How to write a personal statement
- How applicants are assessed
- Tips and advice from current FMD students

Date: 27th September 2023
Time: 17:00 – 19.00
Location: Arts 2 Lecture Theatre



Science and Engineering Careers Week

Are you a student in Science and Engineering?
Come along to our events during Week 7 on
how to:

- Succeed at an assessment centre
- Craft a strong CV
- Give a great interview
- Use online platforms to promote your skills



WELCOME
TO QUEEN MARY
STUDENTS' UNION



What is a Students' Union?

The Students' Union is a student-led organisation, here to help and support you through your time at Uni.

We're a not-for-profit and separate from the University, which means alongside loads of fun activities, sports and events, we also hold the University to account and challenge them on issues affecting students at Queen Mary.

Fun

Supportive

Student-Led



Who leads the Students' Union?



President

Takes the lead and oversees the organisation as a whole with the support of Students' Union staff.



VP Barts & The London

Represents and campaigns on matters relating directly to Barts & The London.



VP Communities

Runs liberation, equality, diversity and inclusion campaigns. Represents student communities.



VP Humanities & Social Sciences

Represents and campaigns on matters relating directly to HSS students.



VP Welfare

Manages the care of students, including welfare, mental wellbeing and financial stability.



VP Science & Engineering

Represents and campaigns on matters relating to S&E students.

6 Full-Time Executive Officers

55+ Part-Time Representatives

20+ School Representatives

400+ Course Representatives

GET INVOLVED

Got a hobby or passion you love? Is there something new you really want to try? We have a diverse range of things for you, linking you up with other people who like the same stuff too!

Societies

Volunteering

Sports Clubs

Student Media

Sustainability



LEARN
NEW
SKILLS



HELLO, SPORTS FANS

Uni is all about creating a lifestyle that works for you and makes you feel great. Perhaps you're sports mad or focusing on health and wellbeing, but even if you have a full-blown fitness phobia we can help find something active that works for you. Hooray for endorphins!

Club
Sport

Qmotion Sport
& Fitness

Get
Active

Social
Leagues

Community
Foundation

Talented Athlete Programme

Focus Team Programme



EVENTS & ACTIVITIES

To make your time at Queen Mary exciting and unforgettable we offer a packed programme of events throughout the year on-campus, online, around London and further afield!

Club nights

Fun stuff

Alcohol-free

Celebrations & liberation campaigns



qmsu.org/events

REPRESENTING STUDENTS

The students' Union is also responsible for representing students at Queen Mary, and we help students to have their say and make their voice heard. Elected reps listen to student feedback and work with the University to change things to improve your experience here and run campaigns and projects throughout the year.



**BE THE
CHANGE
YOU WANT
TO SEE** ❤️



HELP & SUPPORT

Being at university is a big change and you may feel nervous about being here. Don't worry, it's normal! We have services you can use to put your mind at ease.

Academic
Advice Service

Advice &
Counselling

Liberation
Work



TAKE CARE
OF YOURSELF
AND OTHERS



PLACES & SPACES

The Students' Union is a not-for-profit charity. Every penny of profit we make is reinvested back into the activities, campaigns and opportunities we provide for students. We run lots of spaces on campus and offer over 250 student staff roles every year- giving you the opportunity to have a job on campus whilst you study. All our student jobs pay at least the London Living Wage.

Venues

Cafés

Shops

Study & social spaces



SUPPORT YOUR STUDENTS' UNION

It's more important than ever to make sure you spend your cash wisely. That's why we wanted you to know that when you buy something from a Students' Union outlet, you are helping to fund and support a whole load of amazing stuff!

Not for profit, just for students.

Your morning caffeine fix could help fund...

A welfare loan for a student in desperate financial need.

Your lunchtime meal deal could help fund...

A fun event or activity for a liberation campaign.

Your Queen Mary hoodie could help fund...

A training course for students to build skills.

Your club night ticket could help fund...

Volunteering opportunities for students who want to give back to the community.

Your Qmotion gym pass could help fund...

A grant for a sports club to buy new equipment.

GET TO KNOW EAST LONDON

Is London the best city in the world... we think so! There's always something new to do and endless places to explore. There really is something for everyone, secret spots to discover and ways to save money or free things to do too.

Victoria Park and
Mile End Park

Brick Lane
Market

Olympic
Park

Regent's Canal &
Limehouse Basin

Shoreditch & London
nightlife on the doorstep

Genesis Cinema -
local independent

Westfield Stratford City -
Europe's biggest shopping centre



FIND OUT MORE

We've got loads more information for you. Grab our handy guides, check out qmsu.org and find us on all your socials (we're on Instagram, TikTok, Twitter/X, Facebook, LinkedIn, Threads & YouTube).

Guides are available from Ground Café and Students' Union Hub.



ENJOY YOUR DAY!



Watch our YouTube [video](#)

THANK YOU!

🖱️ qmsu.org

📷 QMSU

🐦 @QMSU

📘 Queen Mary Students' Union (QMSU)





LUNCH TIME!!!

