

# Welcome to the School of Physical and Chemical Sciences

Introduction to the School and Central University Services

# Head of School

Professor Adrian Bevan





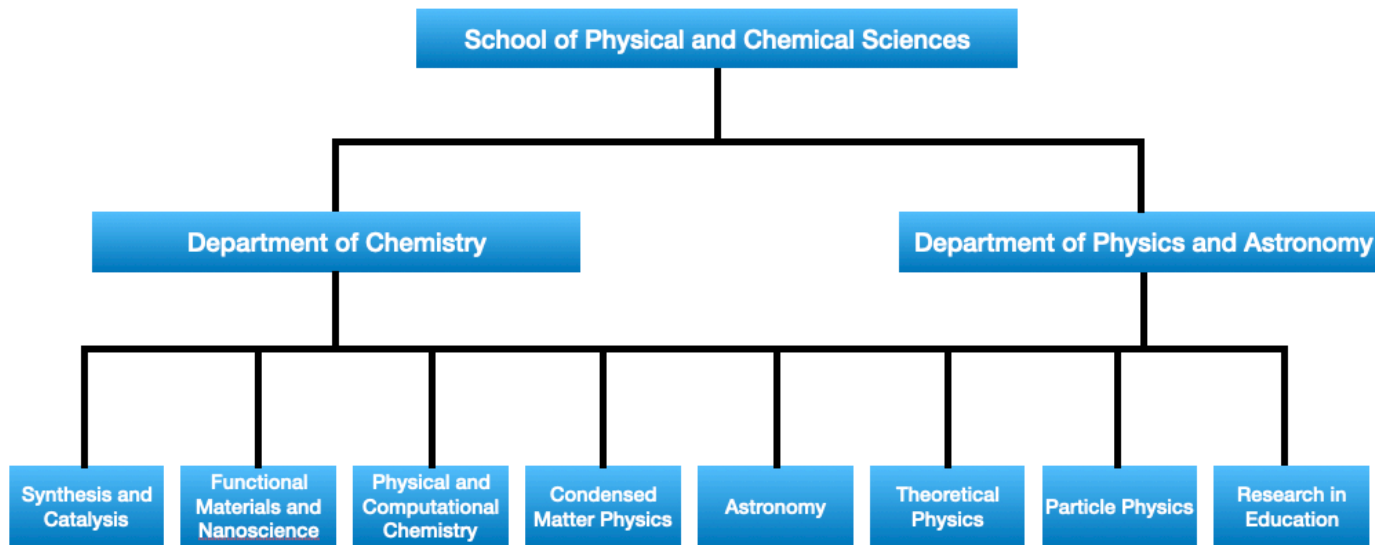
# Welcome to our new School!

We are a new School formed in August 2021 from the existing School of Physics and Astronomy and the department of Chemistry which was in another School within the Faculty of Science and Engineering.

- Strengthen core disciplines which are vital in any research intensive university.
- Exploit the synergies between Physics and Chemistry in research and teaching.
- A better balance of undergraduate student numbers within the Faculty.
- Catalyse the development of new UG and PGT programmes, and new research initiatives.

# Welcome to our new School!

High-level research area structure:



Staff teaching, independent project research opportunities and teaching cuts across the school. People with the best capabilities are delivering on your programmes to maximise the student experience

Our research informs the way that we teach on modules, and the content of modules. We always look for new opportunities to teach relevant and up to date material

# Who is who in the School?

Head of the Department of Chemistry is **Dr Isaac Abrahams**

Head of the Department of Physics and Astronomy is **Prof. Adrian Bevan**

Head of the School is **Prof. Adrian Bevan**

Deputy Head of School is **Dr Isaac Abrahams**

School Manager is **David Boyle**

Director of Education is **Dr Lesley Howell**

Director of Research is **Dr Jan Mol**

# NSS and PTES Highlights

NSS: National Student Survey: some highlights include:

**7/54 for student voice in Chemistry**

**Increases of +21 places in Physics and +15 in Chemistry**

**Also scored highly in organisation**

PTES: Postgraduate Teaching Student Survey:

**Astrophysics MSc: overall 85% student satisfaction**

**Chemistry MSc: overall 83% student satisfaction**

**Physics MSc: overall 100% student satisfaction**

# Welcome to Queen Mary University of London





# We are Careers & Enterprise

Call into reception or phone us.

iQ East 0.08, Mile End Road



020 7882 8533



[careers@qmul.ac.uk](mailto:careers@qmul.ac.uk)



@qmcareers



@qmcareers



[www.qmul.ac.uk/careers](http://www.qmul.ac.uk/careers)



Careers and Enterprise is here to help you. We provide students with information, advice, and guidance on a range of topics, including choosing a career, finding work experience, applying for further study, and starting your own business.

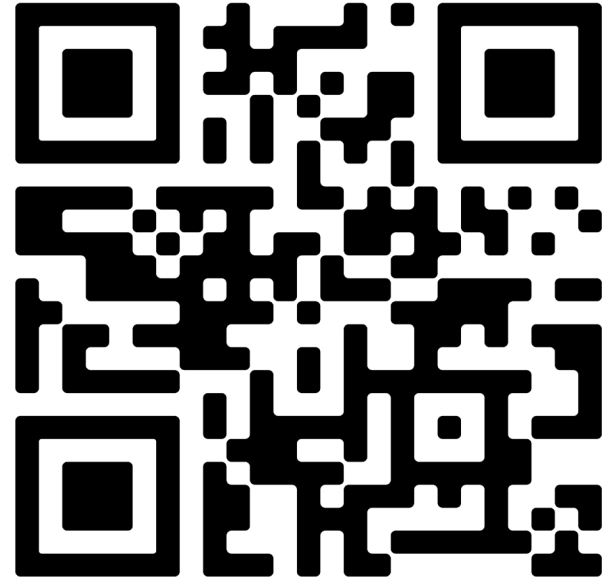
What can I do with my degree?	From application to assessment centre - all the resources you need	Graduate Attributes
Finding work experience, internships, placement & graduate jobs	Alumni profiles & alumni networking	Professional Memberships and Learned Societies
Promoted opportunities		

- > Using online resources for career success
- > CVs, cover letters & application forms
- > Psychometric tests (numerical, verbal reasoning, logical, situational judgement)
- ✓ Preparing for interviews (pre-recorded, virtual, face-to-face)

# QM Careers Hub

To receive vacancies and events,  
complete your 'Profile' and...

**Unlock your QM Careers Hub!**



QR code to access QM Careers Hub



# Application timelines – Start your search now!

Typical Graduate Scheme Calendar



Job Application Tracker - Saved

Richard Sumner

File Home Insert Page Layout Formulas Data Review View Developer Help Power Pivot Search

A1

Application Process Tracker

Your Name: Interview(s) TODAY!

Add any applications that you wish to track below. Simply select the relevant 'Job Description' and then add the dates in as they happen. Any dates overdue for your settings will turn yellow, and then red when considered 'Stale'. When a final decision is made about your application, simply select their final decision. If they offer you the job, then select your final decision (if you accept or not). Any job descriptions on here but NOT on the database will turn red, to indicate that you can remove it.

Rec	JOB	Application	Status	Job Description	Reply	On Hold Until	State			Warnings		Final Decisions	
							Actual Date of 1st Interview	Actual Date of 2nd Interview	Actual Date of 3rd Interview	Y18B Final	Y18B Final	Decision	Decision
✓	✓	01/09/2019	Action	1- Sales Manager - Company A	04/09/2019		20/09/2019	10/10/2019					
✓	✓	01/09/2019	Active	2- Marketing Manager - Company B	08/09/2019		01/10/2019	18/10/2019					
✓	✓	01/09/2019	Stale	3- Sales Manager - Company C	10/09/2019		01/10/2019						
✓	✓	01/09/2019	Stale	4- General Manager - Company D	14/09/2019		01/10/2019						
✓	✓	01/09/2019	Stale	5- Manager - Company E	16/09/2019		01/10/2019						

Intro & Setup Recruiters Database Job Database Application Process Application Report Interview List

# You career journey... EAST

EAST is the Queen Mary student career journey, which will help you prepare for your next steps, whether that be work, study, or your own enterprise.

**Explore** your career options

**Acquire** experience and skills

**Showcase** your experience and skills

**Transition** towards your next steps



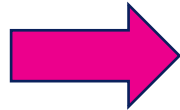
# Support for Students with a Disability

Extended 40-minute career guidance and application appointments (email [careers@qmul.ac.uk](mailto:careers@qmul.ac.uk) to request)

Resources for talking to employers about your disability

Specialist disability themed workshops.

Scan here to find  
out more



## Semester A for International Students

Wednesday 20th  
September

Shanghai Careers Fair

Graduate Recruitment  
in the UK

Monday 25th  
September

Tuesday 26th  
September

Strategic Job Hunting for  
Success

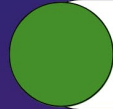
Acing Your Application  
Documents

Wednesday 27th  
September



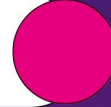
Scan for more information

Monday 2nd  
October



**International Careers  
Drop-In**

**International Careers  
Drop-In**



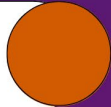
Wednesday 4th  
October

Monday 9th  
October



**Networking and LinkedIn  
Basics**

**Commercial  
Awareness**



Tuesday 10th  
October

Wednesday 11th  
October



**Interview Techniques**

**Application  
Documents/Interview Prep**



Tuesday 17th  
October

# Science and Engineering Careers Week

Are you a student in Science and Engineering?  
Come along to our events during Week 7 on  
how to:

- Succeed at an assessment centre
- Craft a strong CV
- Give a great interview
- Use online platforms to promote your skills





**WELCOME**  
**TO QUEEN MARY**  
**STUDENTS' UNION**



## What is a Students' Union?

The Students' Union is a student-led organisation, here to help and support you through your time at Uni.

We're a not-for-profit and separate from the University, which means alongside loads of fun activities, sports and events, we also hold the University to account and challenge them on issues affecting students at Queen Mary.

Fun

Supportive

Student-Led





## Who leads the Students' Union?



**Serena-Amani**

### President

Takes the lead and oversees the organisation as a whole with the support of Students' Union staff.



**Amaan**

### VP Barts & The London

Represents and campaigns on matters relating directly to Barts & The London.



**Matthew**

### VP Communities

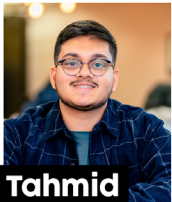
Runs liberation, equality, diversity and inclusion campaigns. Represents student communities.



**Jovani**

### VP Humanities & Social Sciences

Represents and campaigns on matters relating directly to HSS students.



**Tahmid**

### VP Welfare

Manages the care of students, including welfare, mental wellbeing and financial stability.



**Aisha**

### VP Science & Engineering

Represents and campaigns on matters relating to S&E students.

**6 Full-Time Executive Officers**

**55+ Part-Time Representatives**

**20+ School Representatives**

**400+ Course Representatives**

# GET INVOLVED

Got a hobby or passion you love? Is there something new you really want to try? We have a diverse range of things for you, linking you up with other people who like the same stuff too!

Societies

Volunteering

Sports Clubs

Student Media

Sustainability



LEARN  
NEW  
SKILLS



# HELLO, SPORTS FANS

Uni is all about creating a lifestyle that works for you and makes you feel great. Perhaps you're sports mad or focusing on health and wellbeing, but even if you have a full-blown fitness phobia we can help find something active that works for you. Hooray for endorphins!





# EVENTS & ACTIVITIES

To make your time at Queen Mary exciting and unforgettable we offer a packed programme of events throughout the year on-campus, online, around London and further afield!

Club nights

Fun stuff

Alcohol-free

Celebrations & liberation campaigns



[qmsu.org/events](https://qmsu.org/events)

# REPRESENTING STUDENTS

The students' Union is also responsible for representing students at Queen Mary, and we help students to have their say and make their voice heard. Elected reps listen to student feedback and work with the University to change things to improve your experience here and run campaigns and projects throughout the year.



**BE THE  
CHANGE  
YOU WANT  
TO SEE** ❤️



# HELP & SUPPORT

Being at university is a big change and you may feel nervous about being here. Don't worry, it's normal! We have services you can use to put your mind at ease.

Academic  
Advice Service

Advice &  
Counselling

Liberation  
Work



TAKE CARE  
OF YOURSELF  
AND OTHERS





# PLACES & SPACES

The Students' Union is a not-for-profit charity. Every penny of profit we make is reinvested back into the activities, campaigns and opportunities we provide for students. We run lots of spaces on campus and offer over 250 student staff roles every year- giving you the opportunity to have a job on campus whilst you study. All our student jobs pay at least the London Living Wage.

Venues

Cafés

Shops

Study & social spaces



# **SUPPORT YOUR STUDENTS' UNION**

It's more important than ever to make sure you spend your cash wisely. That's why we wanted you to know that when you buy something from a Students' Union outlet, you are helping to fund and support a whole load of amazing stuff!

**Not for profit, just for students.**

Your morning caffeine fix could help fund...

A welfare loan for a student in desperate financial need.

Your lunchtime meal deal could help fund...

A fun event or activity for a liberation campaign.

Your Queen Mary hoodie could help fund...

A training course for students to build skills.

Your club night ticket could help fund...

Volunteering opportunities for students who want to give back to the community.

Your Qmotion gym pass could help fund...

A grant for a sports club to buy new equipment.



# GET TO KNOW EAST LONDON

Is London the best city in the world... we think so! There's always something new to do and endless places to explore. There really is something for everyone, secret spots to discover and ways to save money or free things to do too.

Victoria Park and  
Mile End Park

Brick Lane  
Market

Olympic  
Park

Regent's Canal &  
Limehouse Basin

Shoreditch & London  
nightlife on the doorstep

Genesis Cinema -  
local independent

Westfield Stratford City -  
Europe's biggest shopping centre



# FIND OUT MORE

We've got loads more information for you. Grab our handy guides, check out [qmsu.org](https://qmsu.org) and find us on all your socials (we're on Instagram, TikTok, Twitter/X, Facebook, LinkedIn, Threads & Youtube).

Guides are available from Ground Café and Students' Union Hub.



ENJOY YOUR DAY!



Watch our YouTube [video](#)

# THANK YOU!

---

🖱️ [qmsu.org](https://qmsu.org)

📷 QMSU

🐦 @QMSU

📘 Queen Mary Students' Union (QMSU)

---



# SPCS Student Support

Mr Mason Newbury – Student Support Officer



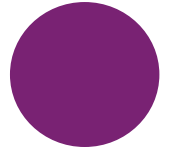
Who is your Student  
Support Officer?

**Mason Newbury**

The best way to contact me:

**Email:** [m.newbury@qmul.ac.uk](mailto:m.newbury@qmul.ac.uk)

**Office:** Office 110, First  
Floor, GO Jones Building



# Where to find us?

## SPCS Admin Office

Room 110, first floor, GO Jones Building

➤ Open Monday to Friday (10 – 4pm)

Here you will find the SPCS admin team including the student support officer.



# What does the SSO do?

- **First point of contact** for all students and signposting support.
- **Offer advice** on matters which may be impeding your ability to study.
- **Monitor attendance and engagement** with your studies and coursework.
- **Feedback and Improving** the student experience.
- **Oversee all EC claims** made by Physics and Chemistry students.



# If you need support don't leave it too late!

## Please do not suffer in silence!

If we don't know that you are struggling, then we can't help you. The biggest regret of first year students is not asking for help sooner.

If you are having any difficulties at all with your studies, please let us know. We are here to help and can provide you with guidance and support.

If you do not feel comfortable approaching us, you can always talk to someone else in the School who you have found supportive (such as a module organiser or teaching staff).

# What are Extenuating Circumstances? (ECs)

An extenuating circumstances claim can be made if you are unable to submit a piece of work, attend a lab session or sit an exam. This will only be accepted if the reason meets the EC criteria.

Extenuating circumstances are usually personal or health problems that are both **unforeseen** and **outside of your control**.

Health problems include your emotional wellbeing and mental health, as well as your physical health.

Extenuating circumstances **do not** include computer problems, misreading your exam timetable, employment commitments, planned holidays or events, or local transport delays.

# How do you make an EC claim?

Please visit **MySIS** to make an EC claim online.

There are two types of claim, a **standard claim** and a **self-certify claim**.

Standard claims must be **supported with evidence**. (for example, a GP letter if for ill-health).

Self-certify claims **do not** require evidence but must still meet the EC criteria.

**Please note:** Students can self-certify up to **3 times each year** (for up to 7 days each time) and cannot be submitted back-to-back to get a longer extension.

# Student Wellbeing at QMUL

# University Support Services

## Disability and Dyslexia Service (DDS)

Located in the Bancroft Building  
Room 3.06 (3rd Floor)

## Advice and Counselling Service

Located in  
Geography Square

## Careers Services

Located in room WG3  
of the Queens' Building

## QMUL Library

Located on Library  
Square

## Students' Union (QMS U)

Located within  
the Students' Union Hub

# Advice and Counselling Service

# Advice and Welfare Advisors

- Funding your studies
- Applying for Hardship Funds
- Dealing with Debt
- Budget planning
- Welfare rights and benefits
- Tuition fee issues
- Immigration Law
- International student issues

# Counselling

Counsellors are currently offering **in person** and **online appointments** via MS Teams.

- Relationship problems
- Depression
- Anxiety
- Difficult decisions
- Identity and Sexuality
- Family Problems
- Exam Stress
- Homesickness
- Group Therapy



# How to contact Advice and Counselling?

Either,

- On the ACS website via their webform.

OR

- On Mysis via the 'student services' tab.

The screenshot displays the website's navigation menu with the following categories and sub-items:

- Money and practical advice**
  - How to fund your studies
  - Tuition fees
  - Budgeting & managing money
  - Changes to study
- Wellbeing support**
  - Counselling
  - Mental Health Advice
  - Student Wellbeing Advice
  - Wellbeing Resources
- Visas and international advice**
  - Do I need a visa?
  - How to apply
  - Travelling
  - Changes during your studies
- Sexual assault and harassment advice**
  - Specialist advice
  - Practical support
  - Emotional support
  - Signposting and referrals
- I'm supporting someone else**
  - Information on supporting students experiencing difficulties
  - Advice for friends and family
  - Advice for staff
- Help in a crisis**
  - Emergency support
  - Urgent mental health support
  - Crisis listening helplines
  - Crisis organisations
- About the Advice and Counselling Service**
  - Data protection and confidentiality
  - Policies and procedures
  - Feedback

**Contact us**

We are normally open Monday to Friday from 10.00 am – 4.00 pm apart from University closure days.

[Contact us here](#)

↑

# Disability and Dyslexia Service (DDS)



The Disability and Dyslexia Service (**DDS**) offers support for all students with disabilities, specific learning differences and mental health issues at Queen Mary University of London (QMUL).

# Disability and Dyslexia Service (DDS)

There are specially trained advisors to support with:

- Dyslexia and specific learning differences
- Disabilities and DSA support
- Autism support and assessments
- Mental health issues
- Exam access arrangements (extra time etc.)
- Accommodation and dedicated study space

**The Disability and Dyslexia Service is located on the 3rd floor of the Francis Bancroft Building in 3.06.**

Please [email the Disability and Dyslexia Service](#) or use the [DDS online contact form](#) to get in touch or book an appointment.

# Student Health Service

There is a free Student Health Service available on campus  
(located in the Geography Building at Mile End Campus).

The Student Health Service is provided by Globe Town Surgery.

Students living in Queen Mary accommodation at Mile End or Whitechapel and students living in the borough of Tower Hamlets (postcodes E1, E2, E3 and E14) are encouraged to register with the Student Health Service.

**You can register online – [www.studenthealth.qmul.ac.uk](http://www.studenthealth.qmul.ac.uk)**

**Any Questions?**

**Thank you**



**Queen Mary**  
**University of London**





We will now split into separate rooms:

- **Chemistry PGT – Room 208**
- **Physics PGT – Room 516**
- **Astrophysics PGT – Stay in room 610**